

# WELCOME

Meet the visionary group of San Miguel Power Association (SMPA) members who are pioneering the landscape of distributed renewable power generation.

The SMPA net metering program enables members to install solar, or other renewable energy generating systems, to offset all or a portion of the electric load at their meter. We encourage you to explore and learn more about the the exciting and rapidly evolving world of net metering.



Sun...

Water...

Wind...

Earth...

Life...

What it's all about...

## YOUR SOURCE OF INFORMATION & HELP

SMPA staff helps guide members through the requirements for installing a net meter system. For example, staff will consult on the sizing of a system to ensure it meets certain state and utility requirements. SMPA experts can also point members towards resources to get more information.



*–SMPA's Energy Services Executive providing answers to a member with questions about billing.*

SMPA will set up a net-metering account and meter once the following have been completed:

- The net meter system has been installed and commissioned.
- A completed copy of the SMPA Net Metering Application has been turned in and approved by SMPA.
- A copy of the approved electrical inspection report filled out by the Authority Having Jurisdiction (AHJ) has been submitted. In most cases the AHJ is the state electrical board.

What you can expect...

## INFORM YOURSELF ABOUT NET METERING

We are here to serve you and your community. That is why we value your investment in renewables. Since SMPA began its net metering program in 2000, members have invested over 6 million dollars in local renewable energy net meter systems. Participation in SMPA's net meter program has grown annually by 37% over the last 15 years. Net-metered members leverage the power of renewables while still accessing the reliability of the grid.

### Return on Investment?

Solar installers often work with more than one utility and the economics of net metering can vary from one to the next. It is always best to check with your utility on the rates and other factors that will impact your bill. SMPA is here to help answer your questions and can provide data you can feel confident putting into your calculations.

### Efficiency Matters

Renewable energy and home energy efficiency go hand in hand. As you step into renewables for your home or business, you also have the opportunity to improve the way you use energy. Remember, the most valuable unit of energy is the kWh that isn't used. Feel free to visit [www.smpa.com](http://www.smpa.com) to learn more about our energy efficiency programs and rebates.

### Requirements

- Generation must be from a renewable resource such as solar, wind, hydro, or biomass.
- A net meter system must have its grid connection point on the member's side of the utility meter.
- A system should not generate more than the historic or expected energy demands at that meter.

### The White Papers

The cooperative is stronger when its members are well-informed. We have prepared several white papers on various subjects related to net metering. These informative documents will help answer your questions, both general and technical, about how net metering works and the policy and rules behind net metering at SMPA. [www.smpa.com/netmetering/whitepapers](http://www.smpa.com/netmetering/whitepapers)

What you want to know...

Over for more information →



Touchstone Energy® Cooperatives  
The power of human connection.

San Miguel Power Association is an equal opportunity employer and provider. If you wish to file a Civil Rights program complaint of discrimination, complete the USDA Program Discrimination Complaint Form, found online at [http://www.ascr.usda.gov/complaint\\_filing\\_cust.html](http://www.ascr.usda.gov/complaint_filing_cust.html), or at any USDA office, or call (866) 632-9992 to request the form. You may also write a letter containing all of the information requested in the form. Send your completed complaint form or letter to us by mail at U.S. Department of Agriculture, Director, Office of Adjudication, 1400 Independence Avenue, S.W. Washington, D.C. 20250-9410, by fax (202) 690-7442 or email at [program.intake@usda.gov](mailto:program.intake@usda.gov).



## FREQUENTLY ASKED QUESTIONS

### Q: When will I see my savings?

**A:** The minute your new net meter system is switched on you will see savings because you are generating and using your own power, and when you do this, you are not buying that energy from SMPA.

Sometimes, you will send excess energy through the SMPA meter onto the grid. In this case, you will see net meter credits for this energy on your monthly billing statements. For a new net meter system, it may take more than one billing cycle for you to see any net meter information on your billing statement.

### Q: How will I be credited for any excess energy my system produces?

**A:** Each month, the kWh total that your system puts onto the grid will be credited against the kWh total that you used from the grid. If your system put more kWhs onto the grid than you used from the grid, the excess will be reserved and applied as credit in future months as needed.

**Example:** Last month, the net metered system put 450 kWh onto the grid and you used 300 kWh. 300 of the 450 generated are used to credit against the kWhs consumed. The remaining 150 kWh carry forward to future months.

This month, the net metered system put 250 kWh onto the grid and you used 350 kWh. The 250 generated is credited against the consumed power leaving 100. You still have 150 kWh in credits, so 100 of these can be applied to the remaining balance, leaving you with 50 to carry forward to future months.

### Q: Why does my inverter show a larger number than the SMPA Meter?

**A:** The net meter system energy meter, usually found on the inverter, is designed to show the total energy that is produced by the system. Some of the energy from the system will power loads in the home directly. Therefore, it will never make it to the SMPA meter. This is demonstrated in Scenarios 1 and 2 in the diagrams to the right. Unless all loads in the home are off when the net meter system is producing, the system output will always be greater than what is shown on the SMPA meter.

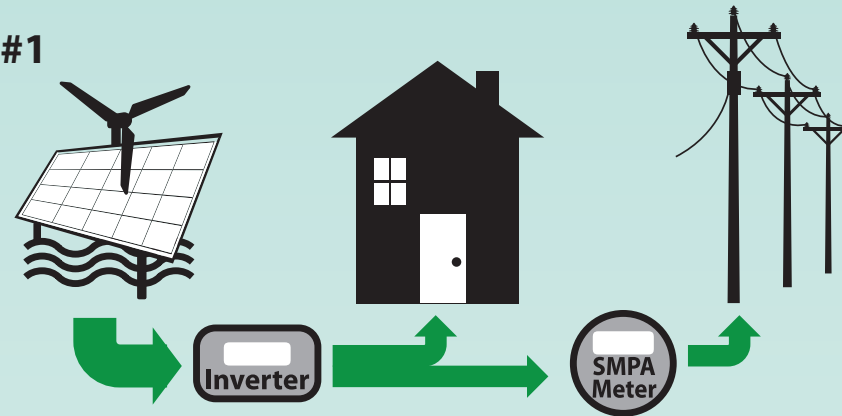
### Q: Will SMPA replace my current meter with a special "net" meter?

**A:** In most cases, the meter you have now is the same meter that will be used for net metering. In fact, except in some special instances, all SMPA meters are prepped for net metering. A meter technician will activate a reverse kWh register on the meter. In many cases, your net meter system will have already been switched on for a number of days before the meter's 'net meter' screen is enabled.

## How Your System Works with SMPA:

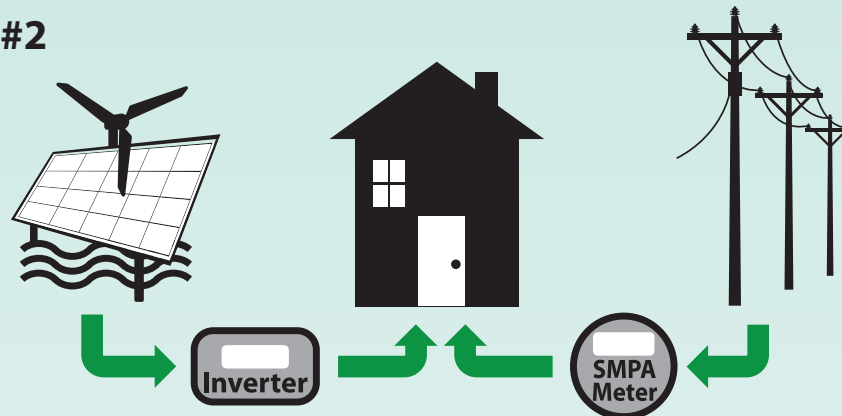
### Scenario #1

Your system generates more than you need. Excess flows to the grid.



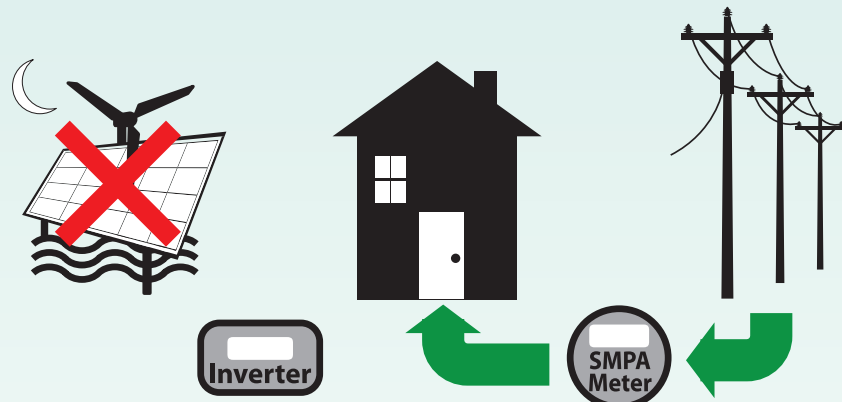
### Scenario #2

Your home needs more than your system is generating. The grid supplies the rest.



### Scenario #3

Your system is not generating. The grid supplies all the energy your home needs.



## NET METERING BECAUSE...

### We Care

It uses clean, renewable sources of energy.

### It Strengthens

It helps build a stronger and more independent community.

### It Advances

It shows the world how to use the latest technology to benefit our communities.

### We Can Save

It harnesses free, abundant energy.

## Meet a Net-Metered Member

"Our net meter allows us to have a positive impact on not only our power bill, but the environment as well. Considering the benefits, I can't see why anyone wouldn't want to install one."



—John Clark of Ridgway, CO net metered since 2013.

Check out [www.smpa.com/netmetering/whitepapers](http://www.smpa.com/netmetering/whitepapers) for more info about...

- Monthly Access Charge
- My SMPA Electric Meter
- Understanding Net Meter Billing
- Net Meter Financial Payback
- Renewable Energy Credits (RECs)
- ...and more

See [www.smpa.com](http://www.smpa.com) →  
Renewable Energy  
or call:  
970-626-5549 ext. 231

In your  
SAN MIGUEL POWER ASSOCIATION

Touchstone Energy Cooperatives  
The power of human connections

## Net Metering Member Information



SAN MIGUEL  
POWER ASSOCIATION  
NET METERING