

# ENERGYWISE

YOUR SAN MIGUEL POWER MEMBER NEWSLETTER



## CONTACT INFORMATION

**Nucla**  
170 W. 10th Ave.  
P.O. Box 817  
Nucla, CO 81424  
(970) 864-7311  
Toll Free: (877) 864-7311

**Ridgway**  
720 N. Railroad St.  
P.O. Box 1150  
Ridgway, CO 81432  
(970) 626-5549  
Toll Free: (877) 864-7311

**Both Offices Open:**  
M - TH • 7:00am – 5:30pm

[www.smpa.com](http://www.smpa.com)  
[www.facebook.com/SanMiguelPower](https://www.facebook.com/SanMiguelPower)

*In the event of a power outage, contact your local SMPA office to reach our 24-hour dispatch.*

## QUESTIONS OR COMMENTS

[energywise@smpa.com](mailto:energywise@smpa.com)  
(970) 626-5549 x2120

## SAFETY TIPS

### SUMMER ELECTRICAL SAFETY:

- Keep appliances away from water
- Fly kites away from power lines
- Avoid overloading outlets

San Miguel Power Association is an equal opportunity provider and employer. In accordance with Federal civil rights law and U.S. Department of Agriculture (USDA) civil rights regulations and policies, the USDA, its Agencies, offices, and employees, and institutions participating in or administering USDA programs are prohibited from discriminating based on race, color, national origin, religion, sex, gender identity (including gender expression), sexual orientation, disability, age, marital status, family/parental status, income derived from a public assistance program, political beliefs, or reprisal or retaliation for prior civil rights activity, in any program or activity conducted or funded by USDA (not all bases apply to all programs). Remedies and complaint filing deadlines vary by program or incident.

Person with disabilities who require alternative means of communication for program information (e.g., Braille, large print, audiotape, American Sign Language, etc.) should contact the responsible Agency or USDA's TARGET Center at (202)720-2600 (voice and TTY) or contact USDA through the Federal Relay Service at (800)877-8339. Additionally, program information may be made available in languages other than English.

To file a program discrimination complaint, complete the USDA Program Discrimination Complaint Form, AD-3027, found online at [http://www.ascr.usda.gov/complaint\\_filing\\_cust.html](http://www.ascr.usda.gov/complaint_filing_cust.html) and at any USDA office or write a letter addressed to USDA and provide in the letter all of the information requested in the form. To request a copy of the complaint form, call

(866) 632-9992. Submit your completed form or letter to USDA by:

(1) mail: U.S. Department of Agriculture  
Office of the Assistant Secretary for Civil Rights  
1400 Independence Avenue, SW  
Washington, D.C. 20250-9410;

(2) fax: (202) 690-7442; or

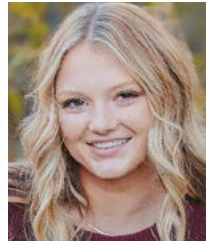
(3) email: [program.intake@usda.gov](mailto:program.intake@usda.gov).

USDA is an equal opportunity provider, employer, and lender.

## FEATURE STORY

# 2024 SMPA Scholarship Winners Announced

Congratulations to the 2024 San Miguel Power Association Collegiate and Vocational Scholarship Winners! We see bright futures ahead!



Norwood High School  
SMPA 3K College & Basin 1K:  
Dilyn Alexander



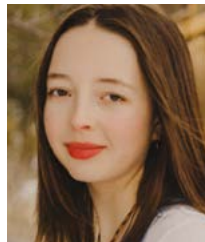
Nucla High School  
SMPA 3K College:  
Shania Joseph



Ouray High School  
SMPA 3K College:  
Lily Feeser



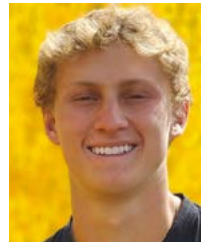
Ouray High School  
SMPA 3K College:  
Landen Hill



Ridgway High School  
SMPA 3K College:  
Ely Patterson



Telluride High School  
SMPA 3K College:  
Kiara Warren



Telluride High School  
Tri-State \$500  
Loudon Doemland,



Telluride High School  
SMPA 3K College:  
Carson Slaughter



Telluride High School  
Tri-State \$500  
Angelica Saldin

## Why Timing Matters – An Annual Meeting Topic

There are many potential benefits of using energy outside of the peak hours from 4 – 9 PM. For now, adjusting your energy use can be as easy as turning the thermostat down a few degrees at 4 PM, or learning to set the “delay” feature when loading the dishwasher after dinner. Yet there may be more opportunities on the horizon. “SMPA is continuing our work on a suite of programs and incentives to help our members take advantage of this opportunity to save on their electric bill while also lowering their carbon use,” says SMPA CEO, Brad Zaporski as part of his report during the Annual Meeting.

A program like this could also lessen the upward pressure on the electrical rates for our member-consumers and reduce not only the carbon demand of the cooperative, but the need for greater infrastructure as well. “Because the sun is providing little solar energy in the evenings, most of the power used during the peak hours of 4 PM to 9 PM, comes from fossil fuels,” says Zaporski. “Moving load away from the peak, helps alleviate this.”

The concept of timing energy use for maximum benefit is not a new one. The current SMPA Board of Directors has the opportunity to leverage the cooperative experience to design a successful program, based upon member choice.



“We know how to maintain the quality of our evenings while still reducing peak usage; all it takes is the will to do so. When we do, we’re energizing a future that benefits us all.”

## Energizing Our Future

At The 2024 SMPA Annual Meeting—held for both online and on-site (in Nucla) audiences—several important updates are shared. The SMPA Chief Executive Officer discusses SMPA’s system improvements, electrical safety, power supply, as well as the benefits of off-peak energy use. The SMPA Board President reports on SMPA’s community engagement, including its assistance in exciting local microgrid projects being funded with state and federal dollars.

You can read up on these and other timely topics in the 2023 SMPA Annual Report, available now. View the report at [smpa.com/content/annual-meeting-election](http://smpa.com/content/annual-meeting-election). You can even order a free, printed copy. Check it out. Learn how we are energizing our future!



# Energizing Their Future: Telluride School District Facility Improvement Program to Reduce Costs, Carbon Output

The sun shines brightly on a new 373 kW solar photovoltaic (PV) array atop the Telluride Middle/High School—now, the largest solar array in the valley. The array is connected to a 250 kW / 550 kWh battery energy storage system which can provide backup power during a local power outage, and, under normal operations, can lower the school’s contribution to the system peak demand, thereby reducing carbon emissions and pressure on electric rates for all power users. That’s not too bad for a medium-sized mountain school district!

SMPA always advises consumers to focus on energy efficiency before investing in renewable power. Telluride schools took this advice to heart as well by

upgrading appx. 970 legacy light fixtures to LED and remediating 34+ sq. ft. of building envelope air leaks, and installing smart snowmelt controls on the existing Telluride Elementary snowmelt systems.

SMPA is proud to have provided technical consulting, and utility rebates to help bring the project from the planning pages to the real-world campus. Congratulations to the Telluride School District R-1 for their forward-thinking project that will be paying back the surrounding community for decades to come.

## ESTIMATED BENEFITS BY THE NUMBERS:

**Project Lifetime Utility & Operational Savings: \$4.3 million**

(...perhaps more if SMPA offers a Time-of-Use (TOU) Rate)

**DOLA RENW Grant Award:  
\$750,000**

**Utility Rebates:  
\$19,400**

**Project Lifetime CO2 Reduction:  
16,000 METRIC TONS**

**Overall Reduction of Utility Costs:  
33%**

(...perhaps more if SMPA offers a Time-of-Use (TOU) Rate))



## Making Headway: SMPA Vegetation Management

As part of a four-year work plan that prioritizes system hardening and system improvements, SMPA has recently added to its list of qualified contractors and has been following a strict schedule of trimming and maintenance in order to properly maintain the rights-of-way.



**GIVE BLOOD** |

**WEDNESDAY, JUNE 19**

**11:30 A.M. - 3:00 P.M.**

[vitalant.org](http://vitalant.org)

**170 W. 10<sup>TH</sup> AVE., NUCLA**



**OUR OFFICES WILL BE CLOSED  
Thursday, July 4th**

Basic services always available at:  
[smpa.smarthub.coop/Login.html](http://smpa.smarthub.coop/Login.html)

**SMPA  
POWER PLAY**

**THIS MONTH'S PUZZLE:**  
ITS R M T GIN MATE  
Hint...Big Difference

Last Month's Answer: QUALIFIED ELECTRICIAN

**SUBMIT YOUR ANSWER**  
and be entered into a drawing  
for a fun prize to:

EnergyWise  
PO Box 1150  
Ridgway, CO 81432