

ENERGYWISE

YOUR SAN MIGUEL POWER MEMBER NEWSLETTER



Touchstone Energy® Cooperatives
The power of human connection.

CONTACT INFORMATION

Nucla
170 W. 10th Ave.
P.O. Box 817
Nucla, CO 81424
(970) 864-7311
Toll Free: (877) 864-7311

Ridgway
720 N. Railroad St.
P.O. Box 1150
Ridgway, CO 81432
(970) 626-5549
Toll Free: (877) 864-7311

Both Offices Open:
M - TH • 7:00am - 5:30pm

www.smpa.com
www.facebook.com/SanMiguelPower

In the event of a power outage, contact your local SMPA office to reach our 24-hour dispatch.

QUESTIONS OR COMMENTS

energywise@smpa.com
(970) 626-5549 x2120

SAFETY TIPS

USE EXTENSION CORDS SAFELY:

- Extension cords are not a permanent wiring solution and should only be used on a temporary basis.
- Inspect all cords before use. If there are any cuts or nicks, don't use the item.
- Only use outdoor-rated extension cords for outdoor use.

San Miguel Power Association is an equal opportunity provider and employer. In accordance with Federal civil rights law and U.S. Department of Agriculture (USDA) civil rights regulations and policies, the USDA, its Agencies, offices, and employees, and institutions participating in or administering USDA programs are prohibited from discriminating based on race, color, national origin, religion, sex, gender identity (including gender expression), sexual orientation, disability, age, marital status, family/parental status, income derived from a public assistance program, political beliefs, or reprisal or retaliation for prior civil rights activity, in any program or activity conducted or funded by USDA (not all bases apply to all programs). Remedies and complaint filing deadlines vary by program or incident.

Person with disabilities who require alternative means of communication for program information (e.g., Braille, large print, audiotope, American Sign Language, etc.) should contact the responsible Agency or USDA's TARGET Center at (202)720-2600 (voice and TTY) or contact USDA through the Federal Relay Service at (800)877-8339. Additionally, program information may be made available in languages other than English.

To file a program discrimination complaint, complete the USDA Program Discrimination Complaint Form, AD-3027, found online at http://www.ascr.usda.gov/complaint_filing_cust.html and at any USDA office or write a letter addressed to USDA and provide in the letter all of the information requested in the form. To request a copy of the complaint form, call

(866) 632-9992. Submit your completed form or letter to USDA by:

(1) mail: U.S. Department of Agriculture
Office of the Assistant Secretary for Civil Rights
1400 Independence Avenue, SW
Washington, D.C. 20250-9410;

(2) fax: (202) 690-7442; or

(3) email: program.intake@usda.gov.

USDA is an equal opportunity provider, employer, and lender.

FEATURE STORY

Equine Therapy Addresses Community Needs with Help from SMPA

As a cooperative, SMPA embraces the seven cooperative principles, including that of “Concern for Community.” This concern can extend to all aspects of community health, including intangible goods like mental health.

Grace Reins Equine Therapy Services is a wellness retreat and wild mustang sanctuary that offers transformative experiences through Individual and Group Sessions. They work with individuals in need like veterans through a ‘wounded warrior’ program. They also work with at-risk youth, people experiencing depression, addiction or--as founder, Erin Cain puts it, “people who just need to reset, refresh and ground themselves again.”

Equine therapy, also known as equine-assisted therapy (EAT) or horse therapy, is a therapeutic practice that involves interactions between humans and horses to promote physical, emotional, and mental well-being. “There’s always this honesty when you step into this space with your horse,” says Cain. “You’re going to receive back what you bring in, so you really have to recognize yourself and what kind of energy you’re putting out there.”

When Grace Reins applied for a donation through SMPA’s Community Focus program, the SMPA board was happy to oblige.

SMPA’s Community Focus policy serves to strengthen our organization’s connection to our membership, deepening member



understanding about SMPA and our mission, while informing the Board and employees about the varied needs within our communities, thereby enhancing the provision of electrical service.

Thanks to donations like SMPA’s, Grace Reins is able to offer “scholarship” assistance where there is need. “We are very grateful for support from organizations like SMPA,” says Cain.

Learn more about Grace Reins Therapy services at www.GraceReins.org.

This St. Patty’s day... Get Your Green On!

Totally Green is the simplest way for you to know that your electricity is from 100% renewable sources. Sign up once. The voluntary 1c per kilowatt-hour bill adjustment automatically tracks your electricity use and makes the needed retirement of Renewable Energy Credits.

Signing up for Totally Green is a great way for SMPA members to affordably support the development of more local renewable energy.

Sign up at smpa.com/content/sign-totally-green



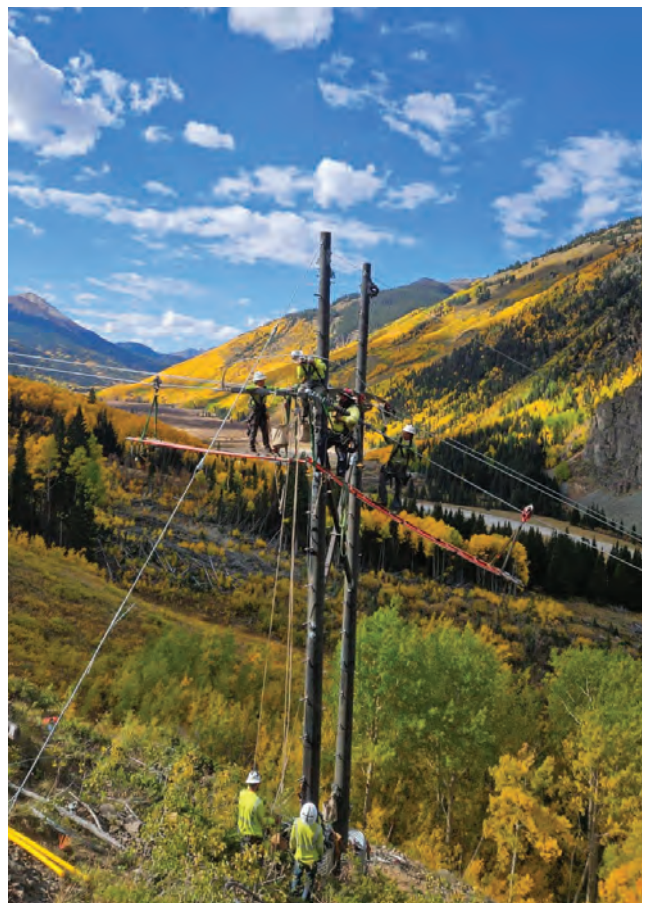
Red Mountain Electrical Reliability and Broadband Improvement Project to Embark on Next Phase

The promise of reliable backup power for Ouray County along with the expansion of the local fiber optic network, will continue to move steadily towards fulfillment this coming spring as SMPA and contract crews rebuild another section of the historic line.

The line ranging from the Red Mountain substation to the Alpine Loop turnoff (South of Ruby Walls) and structures in town west of Oak Street are the next sections to be rebuilt. This work will probably affect travel on Highway 550. There will likely be a need for short traffic holds in early summer and tentative full closures later in the summer, pending permit requirements.

The dates of this work remain subject to Colorado Department of Transportation (CDOT) approval, weather conditions, and emergencies. CDOT has not yet issued a permit, so the schedule is not yet published, but a priority has been set to complete full closures before Memorial Day (May 30) to minimize impacts on tourism and economic activity.

We appreciate the partnership with connected communities and the traveling public as we move, ever closer, toward renewed power resiliency for our members and guests of our beautiful region.



How Time-of-Use Enhances Member Choice

What is Time-Of-Use?

SMPA'S Time-of-Use (TOU) rate offers members a discount on energy for 19 hours of the day, 11¢ / kWh (previously 13.5¢ / kWh). During the 5 hour "Peak" period of 4 p.m. to 9 p.m., members see a higher rate (22¢ / kWh). With minimal impact on the overall cost for most members, Time-of-Use creates incentives for members to use energy during lower-demand periods and it better reflects the actual cost of energy throughout the day.

How can members with varied energy needs make TOU work for them? Learn at smpa.com/timing-matters.



Stay Safe While Working Around Overhead Power Lines:

Look up before raising a ladder or pole to make sure that it will not come within 10 feet of any power lines.

Use wooden or fiberglass ladders outdoors.

Contact your utility company immediately to report downed

Always assume fallen power lines are energized.



Scholarship Deadlines are Fast Approaching...

Students can access funding for college or vocational training through SMPA Scholarships. Check out the opportunities at www.smpa.com/content/scholarships. **Deadline: March 10th. Apply today!**

SMPA

POWER PLAY

THIS MONTH'S PUZZLE:
ENTICE POWR FOB TRIK

Hint... Might as well build it too.

Last Month's Answer: FEASIBILITY AND PLANNING

SUBMIT YOUR ANSWER and be entered into a drawing for a fun prize to:

EnergyWise
PO Box 1150
Ridgway, CO 81432



www.facebook.com/SanMiguelPower