

ENERGY WISE

MONTH 2017

YOUR SAN MIGUEL POWER MEMBER NEWSLETTER



- SMPA Seeks Tri-State Policy Change on Local Generation 1 & 2
- 2017 Scholarship Awards 2
- Power Your Building with Renewable Energy Using Green Blocks 2
- Give the Gift of Life - SMPA Blood Drive 2



CONTACT INFORMATION

Nucla
170 W. 10th Ave.
P.O. Box 817
Nucla, CO 81424
(970) 864-7311
Toll Free: 1-877-864-7311

Ridgway
720 N. Railroad St.
P.O. Box 1150
Ridgway, CO 81432
(970) 626-5549
Toll Free: 1-800-864-7256

Both Offices Open:
M - TH, 7:00 a.m. - 5:30 p.m.

www.smpa.com
www.facebook.com/SanMiguelPower

In the event of a power outage, contact your local SMPA office. If it is after hours, you will be able to automatically transfer to our 24-hour dispatch.

QUESTIONS OR COMMENTS

Send your questions or suggestions for the editors of EnergyWise to:
energywise@smpa.com
(970) 626-5549 x212

SAFETY TIP

What would you do if you were caught in an electrical storm? Remove all metal objects from your pockets, take cover in a brick or wood structure and stay away from windows and doors. Learn more at www.esfi.org

San Miguel Power Association is an equal opportunity provider and employer. If you wish to file a Civil Rights program complaint of discrimination, complete the USDA Program Discrimination Complaint Form, found online at http://www.ascr.usda.gov/complaint_filing_cust.html, or at any USDA office, or call (866) 632-9992 to request the form. You may also write a letter containing all of the information requested in the form. Send your completed complaint form or letter to us by mail at U.S. Department of Agriculture, Director, Office of Adjudication, 1400 Independence Avenue, S.W. Washington, D.C. 20250-9410, by fax (202) 690-7442 or email at program.intake@usda.gov.

SMPA Seeks Tri-State Policy Change on Local Generation



The SMPA Board of Directors sign a letter to Tri-State requesting an increase in local generation allowance. Left to Right: Directors Jack Sibold and Terry Rhoades; CEO, Brad Zaporski; Director Debbie Cokes; Board President, Rube Felicelli (seated); Director Doyleene Garvey; Directors Dave Alexander and Bob Justis.

At its April 25th Board meeting, the San Miguel Power Association (SMPA) Board of Directors agreed to present wholesale power provider, Tri-State Generation and Transmission (Tri-State) with two requests designed to help increase opportunities for local, renewable electric generation projects within the SMPA service territory which includes the area from Silverton to Colona and as far west as the Paradox Valley.

The letter included two SMPA Board resolutions. First, SMPA echoed a recent La Plata Electric Association (LPEA) request that Tri-State increase the

allowable amount of member self-generation under the Wholesale Electric Service Contract from 5% to 10%. This would allow LPEA, SMPA and other similarly positioned cooperatives to continue the expansion of so called "distributed generation" facilities under the current contract.

If Tri-State were to deny this request, new facilities on SMPA's grid that push SMPA's local generation beyond 5% of its total load would not be covered under this contract, but that doesn't mean that they could not come online. A

POLICY CHANGE cont. on page 2



- 4:30-5:30 PM: Voting, Dinner, Music, Activities
- 5:30-7:00 PM: Meeting, Election Results, Prizes

COME TO THE 2017
SAN MIGUEL POWER
ANNUAL MEETING
THURSDAY, JUNE 8th
RIDGWAY, COLORADO
SMPA Office at
720 North Railroad St.

THE CHALLENGE OF CHANGE

POLICY CHANGE cont. from page 1

recent Federal Energy Regulatory Commission (FERC) ruling upheld that distribution cooperatives, like SMPA are required by federal law to connect generation facilities that qualify under the Public Utility Regulatory Policies Act (PURPA), but details on how Tri-State might react are still unclear.

With SMPA's request that Tri-State increase its contractual limit on local generation, the cooperative may not have to worry about the federal law for a while, allowing time for precedents to be set while the cooperative's local, renewable generation portfolio continues to grow.

SMPA Board president, Rube Felicelli recalls that this is not the first time SMPA has made a request of this nature to Tri-State. "We did the same thing several years ago," says Felicelli. "This says to Tri-State that we want to do more, and we want you to raise the cap on local renewables."

The second request also supported the idea of adding renewables to the energy mix, but it also included a proposition to assist communities hit hard by the recent announcement that Tri-State would be closing the power plant and associated coal mine in Nucla, where SMPA is headquartered.

SMPA's request encouraged Tri-State to set the objective of constructing a distributed generation project of a capacity in the 5MW to 30 MW range in the west end of the SMPA service territory. In addition to the economic mitigation for the communities of the West End, there are other factors favoring a potential utility-scale facility in the region. As stated in the request, "The area is rich with potential for utility-scale renewable generation including solar and hydroelectric opportunities; and transmission infrastructure is already in place which may reduce the overall project cost."

With the formal requests of two of its member cooperatives in hand, Tri-State will need to respond. With a service territory that covers significant parts of Wyoming, Nebraska, Colorado and New Mexico, Tri-State must balance the desires of a wide variety of interests within its 43 member systems, while ensuring safe, reliable and affordable service to each. It remains to be seen what their response will be, but as the SMPA request will state, "We are certain that this kind of resolution can be found, and we are committed to finding it."



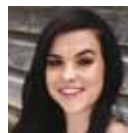
2017 Scholarship Awards

Congratulations to these deserving students who won scholarships from San Miguel Power Association, Tri-State Generation and Transmission and Basin Electric Power Cooperative. Your future looks bright, indeed!



Carlie Wytulka

SMPA Scholarship - \$2000
Carlie Wytulka, Nucla High School



Jordan Leo

SMPA Scholarship - \$2000
Jordan Leo, Ouray High School



Henry Benasutti

SMPA Scholarship - \$2000
Henry Benasutti, Ridgway High School



Devyn Rummel

SMPA Scholarship - \$2000
Devyn Rummel, Norwood High School



Hannah DeKay

SMPA Scholarship - \$2000
Hannah DeKay, Silverton High School



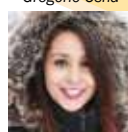
Emma Spaulding

SMPA Scholarship - \$2000
Emma Spaulding, Telluride High School



Gregorio Osha

SMPA Scholarship - \$2000
Gregorio Osha, Telluride Mountain School



Deanna Basulto

SMPA Scholarship - \$2000
Deanna Basulto, Paradox Valley Charter School



Ethan Barnes

SMPA Vocational Scholarship - \$2000
Ethan Barnes, Norwood High School



Devyn Rummel

Basin Electric Power Cooperative Scholarship - \$1000
Devyn Rummel, Norwood High School













Tyler Jansen

Tri-State Scholarship - \$500
Tyler Jansen, Telluride High School



Kenzie Zaumseil

Tri-State Scholarship - \$500
Kenzie Zaumseil, Telluride High School

<p>Looking to power your building with Renewable Energy?</p>	 <p>Green Blocks Powered by SMPA</p>	<p>Other Commercial Programs ...such as  Arcadia Power</p>
<p>You have more options than ever. Learn more at www.smpa.com</p>	<p>Commercial Green Power Program</p>	
<p>Ensures that enough renewable energy to cover your power purchase was generated in the United States.</p>		
<p>Is available to homeowners, renters and businesses alike.</p>		
<p>Is a non-profit program, putting back 100% of proceeds into future renewable project development.</p>		
<p>Utilizes power generated from local solar and hydroelectric projects.</p>		
<p>Supports future renewable generation projects <i>locally</i>.</p>	